

Portfolio

CV

Education

1981-88 Aberaeron Comprehensive School
10 'O' levels, 3 'A' levels

1989-90 CCTA Carmarthen
Foundation course in art & design

1990-93 UCE, Birmingham
BA (hons) Graphic Design

1994-95 Lampeter University
Management course

Work Experience

National Library of Wales

StrataMatrix

Reader's Digest

European Magazine Group

Welsh Books Council

Gomer Press

Software Experience

Adobe Creative Suite

- Indesign
- Photoshop
- Illustrator

Microsoft Office:

- Word
- Excel
- PowerPoint

Wordpress

Interests

Art, horses & farming

garyevans™

dylunio graffeg arlunwaith
graphic design illustration

Logo



NOLTON HAVEN *Holiday Cottages*

*A selection of Self Catering
Cottages set in the heart of
St Brides Bay Pembrokeshire*



www.noltonhaven.com
01437 710263

Weddings

We can help organise weddings and have ample accommodation and room for marquees.



Celebrations

With the number of accommodation options we can offer makes us a perfect choice for group celebrations and gatherings.



Nolton Haven Farmhouse
Nolton Haven, Haverfordwest
Pembrokeshire SA62 3NH

NOLTON HAVEN *Holiday Cottages*

www.noltonhaven.com
01437 710263





Traditional Welsh Entertainment Events & Experience



Contents

- Page 2: An Introduction to Hwyl Events
- Page 2 & 3: Sample Experiences & Prices
- Page 4: Venues
- Page 5: Entertainment Acts
- Page 6: Additional Information

Venue Details:

All Hwyl Events are created as bespoke experiences for your clients - this means that we will work with you to ensure that we build the right event for your customers. Below are just a few examples of the most popular experiences that we can offer, and guide prices for these:

Gwili Railway (B&A £85)

Gwili Railway is one of the UK's most picturesque preserved lines. Set in beautiful countryside with abundant wildlife, the line follows the River Gwili on a steady uphill journey through farmland and wooded hillsides. At Breosydil (the main station), passengers can visit the working

signal box and gift shop. Beyond the locomotives, history and scenery, the railway's appeal lies in the friendliness and enthusiasm of the volunteers who maintain the railway and operate the services.
www.gwili-railway.co.uk



National Botanic Gardens of Wales (B&A £10)

The National Botanic Gardens of Wales is one of Wales' flagship tourism attractions. Housing the largest single-span glass house in the World, this beautiful location has so much to offer visitors - including a visit to the British Bird of Prey Centre and the Tropical

Butterfly House. Whether you're looking to fill a whole day, or a few hours, there is plenty to explore at this site. Combining a visit here with a bespoke Hwyl Event will give your guests a truly unique and memorable experience.
www.botanicgardens.wales



Llety Cynin, R. Ciers (B&A £20)

Llety Cynin is an award-winning Accommodation and Leisure complex based on a traditional working Welsh farm, based near R. Ciers, Carmarthenshire. This peaceful location benefits from stunning views of the farm and surrounding countryside from their newly

renovated function room and offers a real sense of rural Wales. They have a children's play area and a Woodland Walk suitable for all ages.
www.lletycynin.co.uk



Ploeg Rhossman, Llandello (B&A £10)

This charming four-star boutique hotel and award-winning restaurant is set in the beautiful Troey Valley just outside the charming town of Llandello, and at the edge of the Brecon Beacons National Park. The Ploeg enjoys an enviable reputation

for its food and is ideally located to access local attractions such as castles, country houses, and the National Botanical Garden of Wales.
www.ploegrhossman.com



Llanelli House, Llanelli (B&A £10)

Llanelli House is a Georgian gem at the heart of historic Llanelli. This restored town house brings history to life, sharing the story of the Stoney family and their legacy. The ground floor is home to the cafe & restaurant, and their unique gift shop housed in Sir Thomas Stoney's former study.

The fully restored upper floors are only accessible via a guided tour and shouldn't be missed!
www.llanelli-house.org.uk



Page 2

www.hwylevenvents.wales

[Twitter](#) [Facebook](#)

Entertainment Acts

Hwyl Events have access to a range of professional artists providing high quality Welsh cultural entertainment including harpists, traditional Welsh folk dancers, clog dancers, choirs, soloists and comedies. Below is an example of the artists on offer to you.



The harp is the traditional musical instrument of Wales and is a great way to welcome your guests to a venue. It's unique, soothing sound sets the scene from the offset.



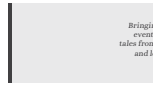
We have access to an array of award-winning traditional dancers - many of whom have won the highest accolade at the National Eisteddfod of Wales. You'll be blown away by their dancing talents.



Our hosts ensure that our events run like clockwork. They make the audience feel right at home, introducing the acts and sharing some stories and jokes from Wales along the way.



We work with a range of choirs, including traditional male voice choirs who really showcase our musical heritage, providing visitors with unforgettable holiday memories and singing some of our most powerful and inspiring songs.



Bringing a little mystery and magic to your event are our host of storytellers. Sharing tales from Wales including our ancient myths and legends, they bring our history to life (in a fun and informal way).



Additional Information

Events can be tailored to your requirements and the above options are examples of what can be arranged. Each sample can be adapted and amended to suit your group's needs in terms of location, numbers, timings, refreshments entertainment and activities. Get in touch to find out more.

- All the sample experiences are based on minimum numbers of 50. If you'd like options for less people, then we are happy to cost alternative options.
- Artists are subject to change and dependent on availability - however all artists will be of a high standard and be providing an authentic Welsh experience.
- The entertainment can be tailored to the audience - if your group is a family group or a special interest group then we will happily make amendments to suit your group's needs.
- All events will incorporate use of the Welsh language to give an authentic experience but will be compered through English.
- No VAT applies to the above fees.
- We will also offer a small Welsh 'favour/gift' for each guest in the above price.
- Our booking terms and cancellation policy will be provided prior to any bookings made.

We look forward to giving your clients
a warm Welsh welcome -
'Cresio Cynnes'!

Hwyl Events are organised by Carmarthenshire Tourism Association.
For all enquiries, please contact Nia or Lowri
on info@visitorscarmarthenshire.co.uk or call 01269 598440

www.hwylevenvents.wales

CARMARTHENSIRE
TOURISM ASSOCIATION
CYMRUAS
TWYTHIARTH SŴ GAR



Arweir gan
Llywodraeth Cymru
funded by
Welsh Government

Page 3

www.hwylevenvents.wales

[Twitter](#) [Facebook](#)

DYFED FINANCIAL SERVICES GWASANAETHAU ARIANNOL DYFED

5 Llys y Barcud, Crosshands Business Park, SA14 6RX
Tel: 01269 608490 Mob: 07969 308820 E-mail: dyfedfinancialservices@gmail.com

Income Protection

Mortgages & Mortgage Life Protection

Critical Illness Life Protection Whole of Life Insurance

ISA's Lifetime ISA (LISA)

DYFED FINANCIAL SERVICES

New Office Opening

On
2nd October 2017
@

5 Llys y Barcud
Crosshands Business Park
Crosshands SA14 6RX

Pensions

Regular Saving Investments Child Saver Plans

Onshore & Offshore Investment bonds

Trusts & Inheritance Tax Planning

Tel: 01269 608490 Mob: 07969 308820 E-mail: dyfedfinancialservices@gmail.com

Emyr Wyn Lewis DipFA MIA IFS
Professional Personal Transparent

Dyfed Financial Services offer a **'FREE'** no obligation consultation service

Impartial Independent advice for all your financial planning needs

PROTECTING YOUR FINANCES AND WELL-BEING

Millions of Britons face financial fallout should serious illness strike

IT'S EASY TO THINK THAT WE WILL NEVER BE DIAGNOSED WITH A CRITICAL ILLNESS, PARTICULARLY WHEN WE FEEL HEALTHY AND ENERGISED. BUT WE CAN FALL ILL WITH VERY LITTLE WARNING. A CRITICAL ILLNESS CAN HAVE A SERIOUS IMPACT NOT ONLY ON YOUR OWN LIFE, BUT ALSO ON THE LIVES OF YOUR CHILDREN, SPOUSE OR PARTNER. SO IT'S IMPORTANT TO MAKE SURE THAT YOU FINANCIALLY PROTECT YOURSELF AND YOUR FAMILY.

FINANCIALLY SECURE
The good news is that the certain illnesses that used to be fatal are now survivable. However, it makes sense to protect yourself and your family from the financial fallout, as you'll need time out to recover – and that can have a big impact on your family.

HOUSEHOLD WOULD NOT BE FINANCIALLY SECURE

A fifth of the population (21%) admit their household would not be financially secure for any length of time if lost to main income through unforeseen circumstances, according to research from Scottish Widows. And more than a third (38%) would resort to accessing their savings if they were unable to work. Despite this, however, only a third (32%) of people have life insurance, and just one in ten (9%) have taken out critical illness cover. These national cancer awareness campaigns took place in March this year. Prostate Cancer, Ovarian Cancer and Brain Tumour.

The statistics about serious illness are also striking. Prostate cancer is the most common cause of cancer in men in the UK, and one in eight men will be diagnosed with this illness during their lifetime, while around 20 women are diagnosed with ovarian cancer every day (1). In addition, ten people a day die of a brain tumour, and this is the chief cause of cancer deaths in children and young people (2).

£4.5 MILLION IN CRITICAL ILLNESS CLAIMS

Scottish Widows paid out almost 4.5 million in critical illness claims relating to prostate cancer, ovarian cancer and brain tumours in 2015/16, which collectively accounted for almost one in ten (9%) of all cancer claims that year. Almost two thirds (66%) of all critical illness claims were, in fact, due to cancer. The

average age of diagnosis for prostate cancer in 2015 was 72, while the average age for ovarian cancer was 47. More than half (55%) of brain tumour claims were made, the youngest being 30 years of age.

FORCED TO BORROW MONEY FROM PARENTS

The cancer awareness campaigns coincided with the publication of a new report, 'No Small Change', by Macmillan Cancer Support, which revealed that thousands of middle-aged people in the UK are being forced to borrow money from their parents because of the cost of having cancer. Macmillan estimates that more than 30,000 people with cancer in their 40s have borrowed money from their elderly parents, and more than 2,000 have moved in with their parents or parent-in-law after having to sell their house.

The charity says that 28% of people with cancer of all age groups – an estimated 700,000 individuals – are vulnerable too because they have no savings to fall back on. And for 83% of cancer patients, lost income and increased expenditure brought about by the disease costs them an average of £570 a month.

FAMILIES WHO ARE STRUGGLING TO COME TO TERMS

At a time when welfare reform is resulting in significant changes to benefits, it is important to take time to consider the arrangements of financial resources available to you for those 'what if's', and how would we, 'scenarios to help ensure provision is in place to safeguard your financial future and well-being. Whether this is achieved by applying for extra cover increasing your emergency fund provision and/or by selling down your assets, a strategy should be in place.

ARE YOU PREPARED IF LIFE THROWS SOMETHING UNEXPECTED YOUR WAY?

Critical illness cover pays out tax free lump sum £ during the term that you select, you are diagnosed with one of the specified conditions covered by the policy.

It's entirely up to you how you choose to spend the money, but you could use it to pay off your mortgage or other debts, maybe a holiday to help you recuperate, or for home modifications such as building ramps or widening doorways for wheelchair access. Knowing you don't have to worry about your financial commitments if you're unable to work can give you peace of mind. To find out more about the options available to you, contact us for further information.

Source data:
(1) Cancer Research UK
(2) Brain Tumour Research
(3) Based on Scottish Widows and Clinical Medical Claims

The Scottish Widows Protection research is based on a survey conducted by Scottish Widows who interviewed a total of 5,161 adults between 28th January and 17th February 2016.

WITH EQUALISATION OF PREMIUMS FOR MALES AND FEMALES IN MANY LIFE ASSURANCE CONTRACTS, AND MANY MORE CRITICAL ILLNESS DEFINITIONS ADDED AND COVERED BY LIFE POLICIES, WE FEEL IT IS PRUDENT TO REVIEW YOUR CURRENT LIFE COVER OR CRITICAL ILLNESS COVER TO ENSURE THAT YOU HAVE AN EXTENSIVE COVER FOR CRITICAL ILLNESS DEFINITIONS UNDER YOUR POLICY AND AT THE MOST EFFICIENT PREMIUM.

DYFED FINANCIAL SERVICES WILL PROVIDE A 'FREE' NO OBLIGATION QUOTE FOR YOUR LIFE ASSURANCE NEEDS

INTRODUCTION TO DYFED FINANCIAL SERVICES

Dyfed Financial Services was launched 12 years ago, and currently operate from offices at Quay Street Carmarthen and Peniel Lane in Abereeron.

Prior to launching my own company, I was employed by Pearl Insurance as an area manager for 9 years, covering the Gwendraeth Valley area, including Kidwelly and Llanelly. Pearl ceased to operate as a home service company in 2003 and made managers and agents redundant in December of that year. After a two years' sabbatical from the financial sector, I became an independent adviser in 2005 and have continued in that vein for the past 12

years, operating as a trading style of West Wales Financial Services from their Carmarthen office, before opening an independent office at Peniel Lane, Abereeron.

I have lived in Crosshands for the past 22 years and reside in Gorslas on Penrygroes Road, and although I currently have many clients in the Crosshands area, I have decided to locate an office in Crosshands, and subsequently advertise, and offer my professional services to a wider audience.



Dyfed Financial Services offer personal, professional and transparent financial service to all its clients, with an emphasis on 'treating clients fairly' in all client transactions.

We offer a professional and comprehensive service, tailored to each individual need, and will ensure a professional approach, prior, during and post client transaction.

This service is offered in the comfort of your own home or at our office at 5 Llys y Barcud, Crosshands.

Appointments can be accommodated from 9am – 9pm Monday – Friday and weekends can be accommodated at your convenience.



Appointments can be made by:
Telephone: 01269 608490
Mobile: 07969 308820 or
E-mail: dyfedfinancialservices@gmail.com

ITS NEVER 'TOO EARLY' OR 'TOO LATE' TO SECURE OR PLAN YOUR FINANCIAL FUTURE

IT IS NEVER TOO EARLY OR TOO LATE TO PLAN FOR YOUR RETIREMENT

PENSION FREEDOMS
Retirement savers say they are still confused by the rules

ON THE SECOND ANNIVERSARY OF THE PENSION FREEDOMS REFORMS THAT TOOK EFFECT FROM APRIL 2015, SOME RETIREMENT SAVERS SAY THEY ARE STILL CONFUSED BY THE RULES AND WANT NO MORE CHANGES.

THE changes of April 2015 represented a complete shake-up of the UK's pension system, giving people much more control over their defined contribution pension savings than before. There are now more options for using this type of private pension pot, enabling some people aged over 55 to have greater freedom over how they can access their pension pots – the money they've built up during their working life.

STILL CONFUSED BY THE REFORMS
Independent research (1) from Prudential highlights that two out of three over 55 (67%) – the age from which retirement savers can utilise the new rules – say they are still confused by the reforms. More than three quarters (77%) want us to further changes to pension rules, and more than four out of ten (42%) say the confusion continues to persist. More than half (51%) say they are still confused by the reforms. More than three quarters (77%) want us to further changes to pension rules, and more than four out of ten (42%) say the confusion continues to persist. More than half (51%) say they are still confused by the reforms. More than three quarters (77%) want us to further changes to pension rules, and more than four out of ten (42%) say the confusion continues to persist.

STILL CONFUSED BY THE REFORMS
Independent research (1) from Prudential highlights that two out of three over 55 (67%) – the age from which retirement savers can utilise the new rules – say they are still confused by the reforms. More than three quarters (77%) want us to further changes to pension rules, and more than four out of ten (42%) say the confusion continues to persist. More than half (51%) say they are still confused by the reforms. More than three quarters (77%) want us to further changes to pension rules, and more than four out of ten (42%) say the confusion continues to persist.

HAVING AN IMPACT IN OTHER WAYS

The new pension freedoms are having an impact in other ways. Nearly one in ten (9%) over 55 say they have made changes to their retirement plans as a result of the reforms. Receiving professional financial advice has also been increasing, with a fifth of retirement savers (20%) saying they are taking advice, while a further 9% are either planning to or have done so for the first time.

However, concerns that pension rules may change again in the future persist, with 81% of over 55 worried that the State Pension might be reduced and 57% concerned it will be abolished within two out of three (63%) also believe that tax relief on pension contributions will be reduced at some time in the future.

INCREASE FLEXIBILITY BROUGHT ABOUT BY THE REFORMS

Nearly 500,000 people have accessed more than £2 billion in funds since the launch of pension freedoms (3), demonstrating that there is popular demand for the increased flexibility brought about by the reforms. Two years on from the introduction of the new rules, there is also widespread confusion, with two out of three over 55 admitting they don't fully understand the reforms. This lack of understanding may be a contributing factor in pension-related tax paid to the Treasury being higher than originally expected.

IMPORTANCE OF ADVICE AND GUIDANCE
This widespread confusion underlines the importance of advice and guidance in ensuring that the pension freedoms are a long term success, and it is encouraging that many savers recognise how advice can help them to make the most of their retirement pot. This is a crucial fact, because how you take your pension could have many consequences, including putting you in a higher tax bracket – even that is not normally the case.

FIRST STEP TOWARDS HAVING SUFFICIENT INCOME FOR A HAPPY RETIREMENT
The pension freedoms provide a framework of rules, but it is down to individuals to seek help where needed to enable them to plan how to meet their financial goals. Saving as much as possible as early as possible during your working life is the first step towards having sufficient income for a happy retirement. If you would like to discuss how to maximise your retirement opportunities, please contact us.

Source data:

(1) A survey of retirement and pension savings by Prudential between 1st and 2nd February 2017 covering a representative sample of 867 people aged 55 plus.
(2) https://www.gov.uk/government/uploads/attachmentes/attachment_data/file/591446/retirement-savings-2015-16-consultation-response.pdf
(3) https://www.gov.uk/government/uploads/attachmentes/attachment_data/file/591446/retirement-savings-2015-16-consultation-response.pdf

A PENSION IS A LONG-TERM INVESTMENT. THE FUND VALUE MAY FLUCTUATE AND CAN GO DOWN, WHICH WOULD HAVE AN IMPACT ON THE LEVEL OF PENSION BENEFITS AVAILABLE.

YOUR PENSION INCOME COULD ALSO BE AFFECTED BY INTEREST RATES AT THE TIME YOU TAKE YOUR BENEFITS. THE TAX IMPLICATIONS OF PENSION WITHDRAWALS WILL BE BASED ON YOUR INDIVIDUAL CIRCUMSTANCES, TAX LEGISLATION AND REGULATION, WHICH ARE SUBJECT TO CHANGE IN THE FUTURE.

PENSION FREEDOMS ALLOW YOU TO ACCESS YOUR PENSION FUND FROM AGE AND THERE ARE SEVERAL OPTIONS AVAILABLE UNDER THE NEW LEGISLATION.

The Majority of financial companies will require you to obtain financial advice before they will allow you to access your personal pension. Your personal pension may not be flexible to allow you to access your funds as required and advice is key to determine what is right in relation to your personal circumstance. Even if you have a personal pension and have not yet reached the age of 55, it is prudent to review your pension periodically. WHERE IS IT INVESTED? WHAT ARE THE OPTIONS UNDER THE PLAN? WHAT ARE THE CHARGES? WHAT HAPPENS ON DEATH?

DYFED FINANCIAL SERVICES WILL PROVIDE A NO OBLIGATION COMPREHENSIVE REVIEW OF ALL YOUR CURRENT PERSONAL PENSION PLANS. ONLY IF IT IS IN THE PLAN OWNER'S INTEREST, AND IN ADDITION, THERE IS NO MATERIAL ADVANTAGE TO THE PLAN OWNER, WOULD WE ADVISE YOU TO TRANSFER OR ACCESS ANY PERSONAL PENSION PLAN.

RHOSYGILWEN

A passion for performance/ A angerdd am berfformiad

Rhaglen/Programme 2020

Menter Rhosygilwen, Neuad

20th March 8.00 pm £17.50

Clare Teal with Jason Rebello (piano)



Clare Teal is one of the UK's most celebrated and much loved singers, as well as a prolific recording artist and popular BBC Radio 2 broadcaster. To date she has recorded and released 14 albums to public and critical acclaim. With her stunning voice, encyclopaedic knowledge of jazz, swing and big band music, she never fails to thrill her audiences.

22nd March 12.00 pm Mother's Day £18.00

Mother's Day Lunch with live jazz



Mother's Day lunch at Rhosygilwen is a very special occasion. If you don't have a mother, bring someone else's mum as Mothers need to be remembered on this day devoted to them. Also featuring **Jean Louis' Gypsy Jazz** band.

22nd March Piano recital 7.30 pm

Ivan Ilić (piano)



Beethoven Sonata No 8 Op 13 *Pathétique*; **Melaine Dalibert** (1979) Etude II (2019, UK premiere); Chopin 4 Nocturnes; **Liszt** Six Consolations
Serbian American pianist Ivan Ilić makes a welcome return to Rhosygilwen with a selection of Chopin's Nocturnes, Liszt's Six Consolations, Beethoven's *Pathétique* Sonata and a brand new work by French composer/pianist Melaine Dalibert, receiving its Welsh premier performance. Please note this recital will be performed in Rhosygilwen Mansion.

3rd April Recital 8.00 pm

Joanna Macgregor



Ligeti Musica Ricercata Op.1 1-8; **Wagner/Koscis** Prelude from *Tristan und Isolde*; **Wagner/Liszt** Liebestod from *Tristan und Isolde*; **Liszt** Funerailles; **Schubert** Sonata in B flat D960
Joanna Macgregor played one of the most memorable concerts at Rhosygilwen in 2019 so we have invited her back again. She is a British concert pianist, conductor, composer, and festival curator. She is Head of Piano at the Royal Academy of Music and a professor of the University of London and artistic director of the International Summer School & Festival at Dartington Hall.

29th Feb 8.00 pm

St David's Gala Concert. £12.00



Featuring: Ysgol Gerdd Ceredigion, Gwawr Edwards, Gwyn Morris, Steve Welsh, Alistair Auld (piano).

The year's St David's Gala concert launches our programme for the coming year. We are pleased that the award winning conductor Islwyn Evans is back with the Ysgol Gerdd Ceredigion Junior choir. Islwyn had a highly successful year in 2019 with his choir representing Wales in Gothenburg's Eurovision contest. The evening also features the Welsh Soprano Gwawr Edwards, Gwyn Morris and Alistair Auld (piano).

1st Mar 7.30 pm

Folk Concert. £12.00



ALAW. With Dylan Fowler, Jamie Smith, Oliver Wilson Dickson.

Alaw are a Welsh folk trio that combine outstanding musicianship with fiddle (Oliver Wilson Dickson), guitar (Dylan Fowler) and accordion (Jamie Smith). Whether unearthing rare gems or reimagining a well-loved melody they treat their music with a deftness and sensitivity that is thoroughly absorbing.

13th March 8.00 pm

Book Club £5.00



Featuring John Le Carré – *Agent Running in the Field*.

Rhosygilwen and Penfro present the first in our series of Book Club events where we pick a book and invite readers to critique the work. This evening we feature a discussion on the writer John Le Carré and his new book *Agent Running in the Field*.

17th March 8.00 pm

St Patrick's Day £10.



St Patrick's night with Racker Donnelly & Dublin Mensshed Choir.

Former UK Slam Champion Poet, Irish Times Speaker of the Year & Grand Marshal of the Dublin Riviera, **Racker Donnelly**. With the Dublin Mensshed Choir who are making a special trip to Rhosygilwen to celebrate St Patrick's Day in Wales. Join in the good humoured poems and singing and just a little bit of tipple.

19th June The Blues 8pm £12.50

Ma Bessie's Prohibition Blues



Bessie Smith is given the royal treatment in this dedication to prohibition era blues and jazz. Julia Titus rich vocals – teamed with a live band – document Smith's life with a repertoire including Smith's classics, plus the music of contemporaries like Ella Fitzgerald and Billie Holiday.

28th June Piano Recital 7.30 pm

Sofya Gulyak



Sofya Gulyak was awarded the 1st prize and the Princess Mary Gold Medal at the Sixteenth Leeds International Piano Competition – the first woman in the history of the competition to achieve this distinction. Since then she has appeared all over the world to great acclaim. She will be playing Bach, Brahms, Chopin, Rachmaninoff & Prokofiev.

10-11th July Opera 6.00pm £17.50

Rigoletto



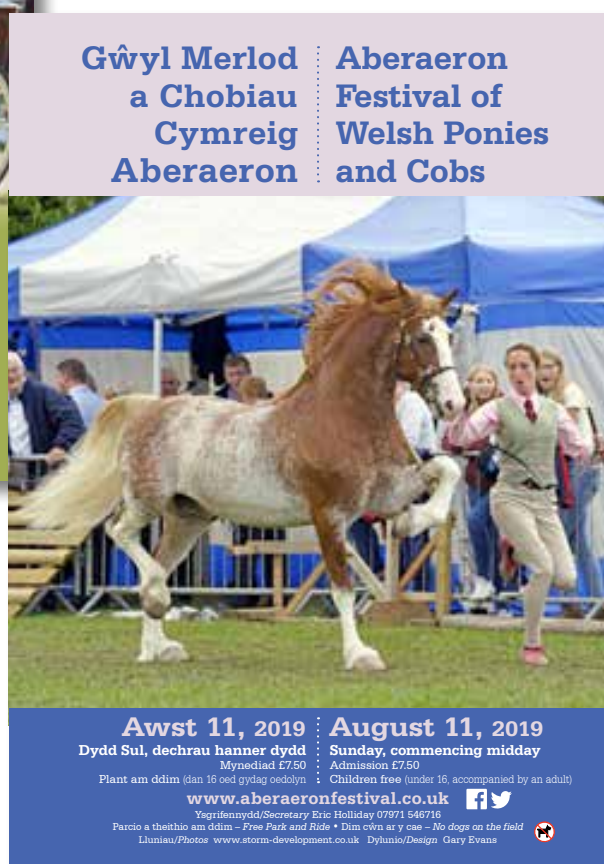
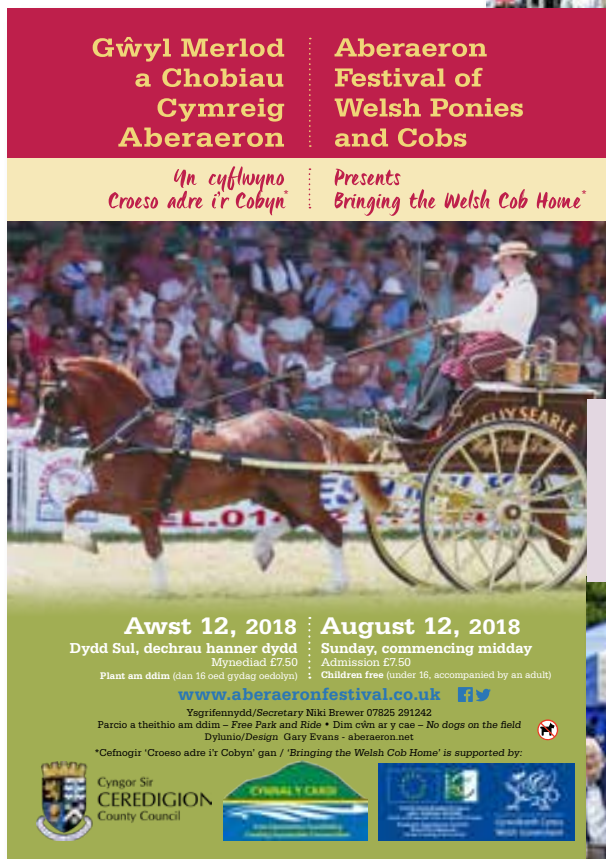
A tragic story of jealousy, vengeance and sacrifice, *Rigoletto* is one of Verdi's most popular operas. It features some of opera's most immediately recognisable music, including 'Women abandon us' ('La donna è mobile'). This is our summer opera production. Please note performances start at 6pm with a long picnic interval. Full cast will be published later in the spring.

29-30th August Fair 10.00 am FREE

Loving the Earth



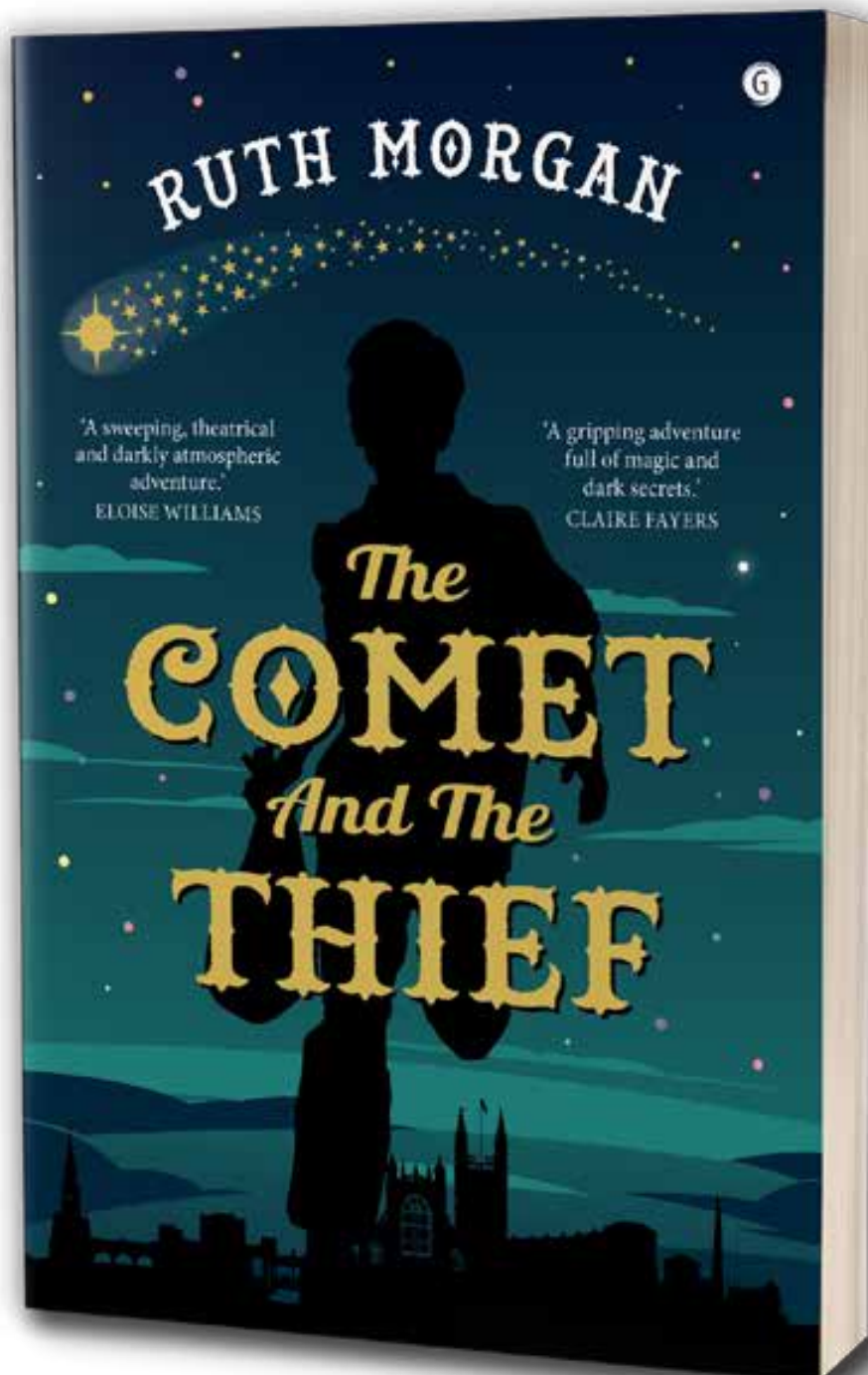
Enjoy two days of workshops and exhibits with the theme of going green. Energy, housing, crafts, fashion, horticulture, travel, green finance. Family friendly fun for all.



garyevans™

dylunio graffeg arlunwaith
graphic design illustration

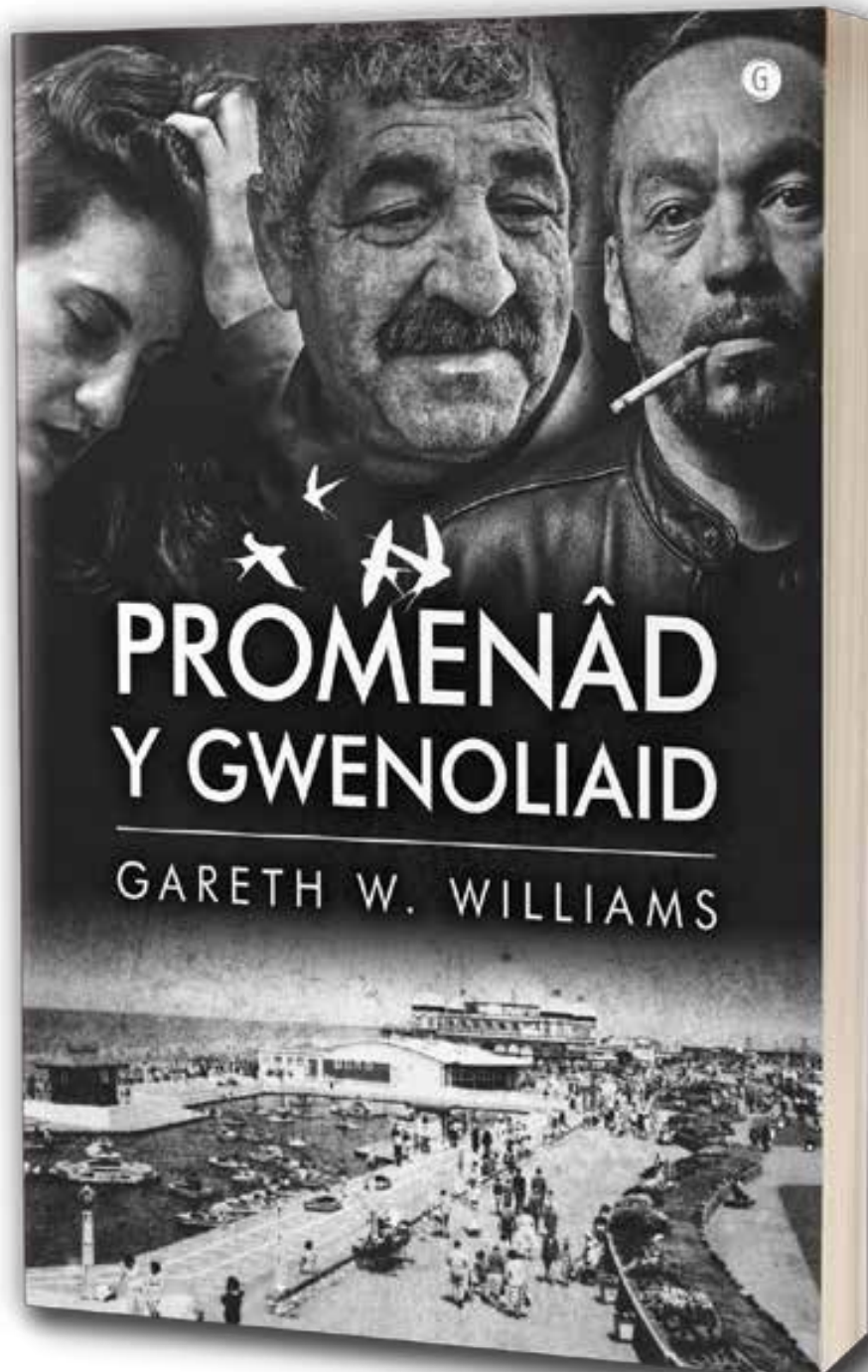
Books



garyevans™

dylunio graffeg arlunwaith
graphic design illustration

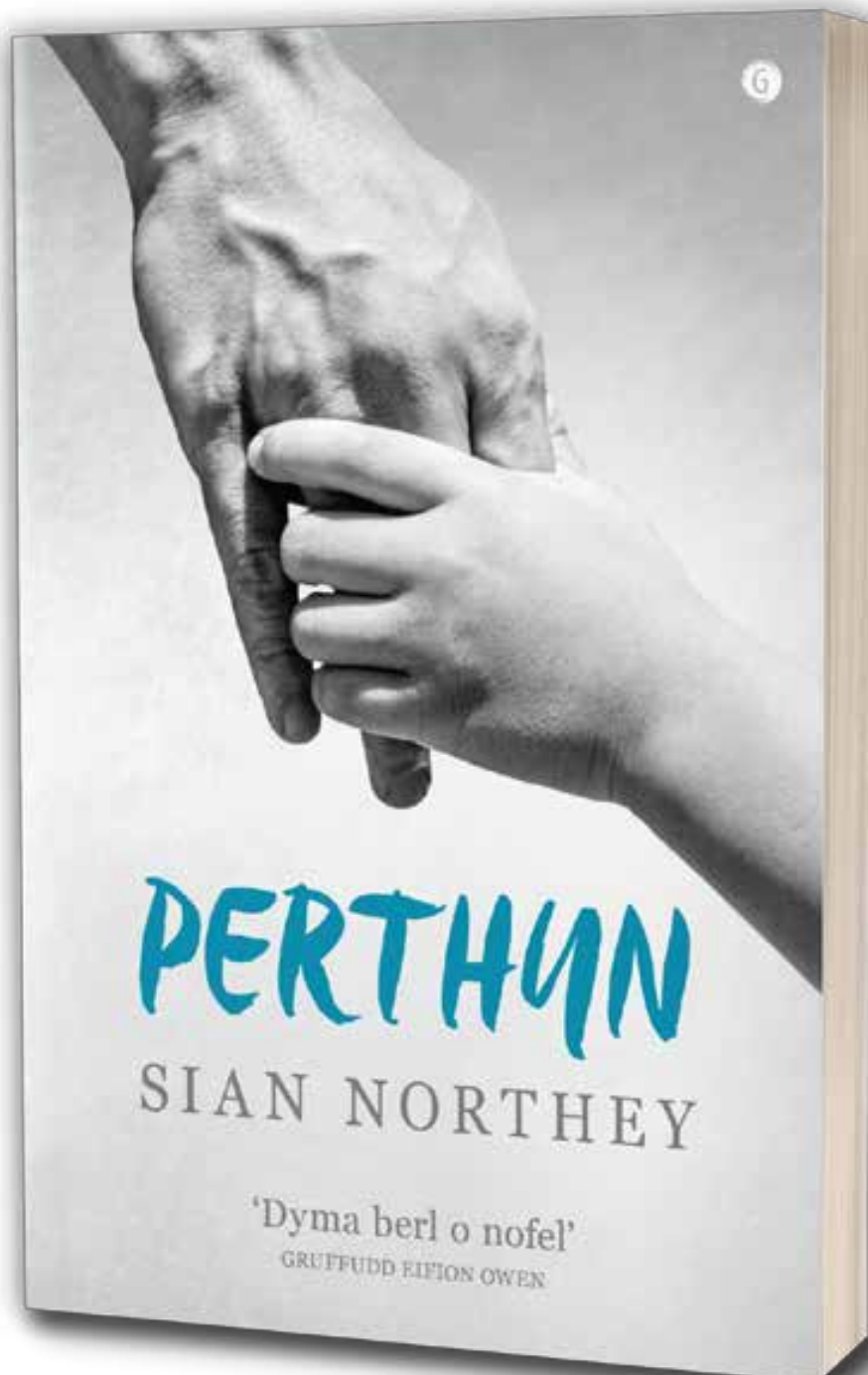
Books



garyevans™

dylunio graffeg arlunwaith
graphic design illustration

Books



garyevans™

dylunio graffeg arlunwaith
graphic design illustration

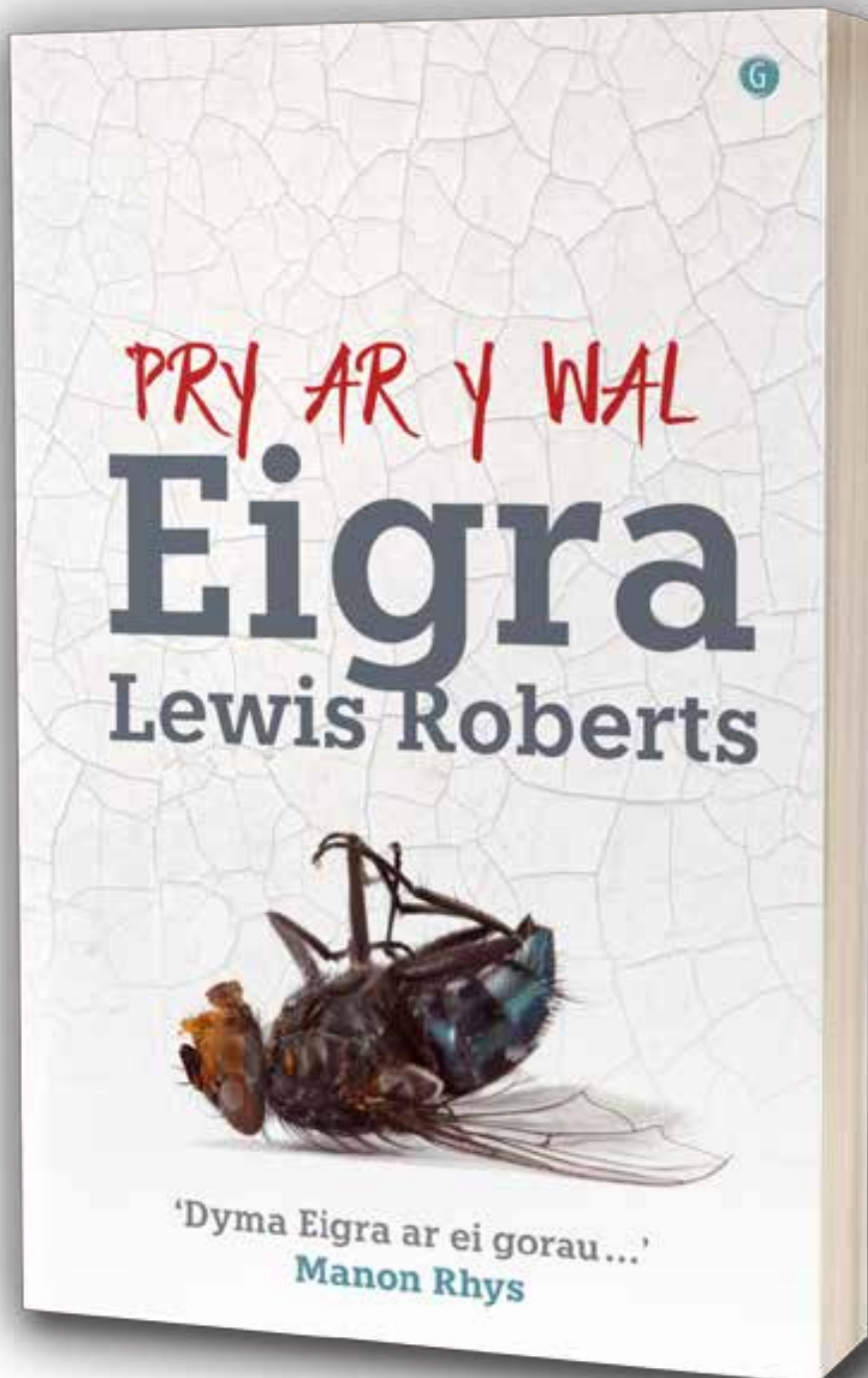
Books



garyevans™

dylunio graffeg arlunwaith
graphic design illustration

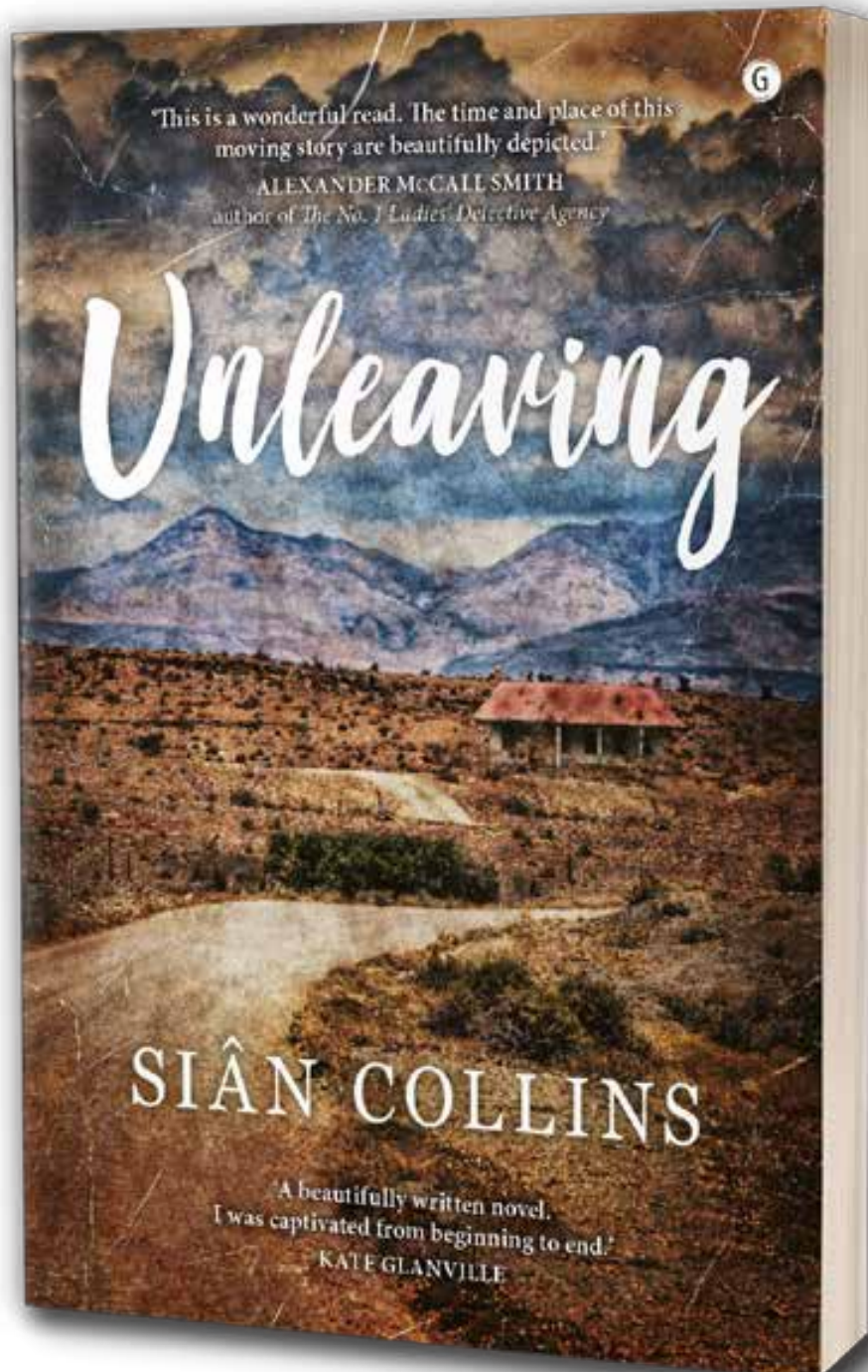
Books



garyevans™

dylunio graffeg arlunwaith
graphic design illustration

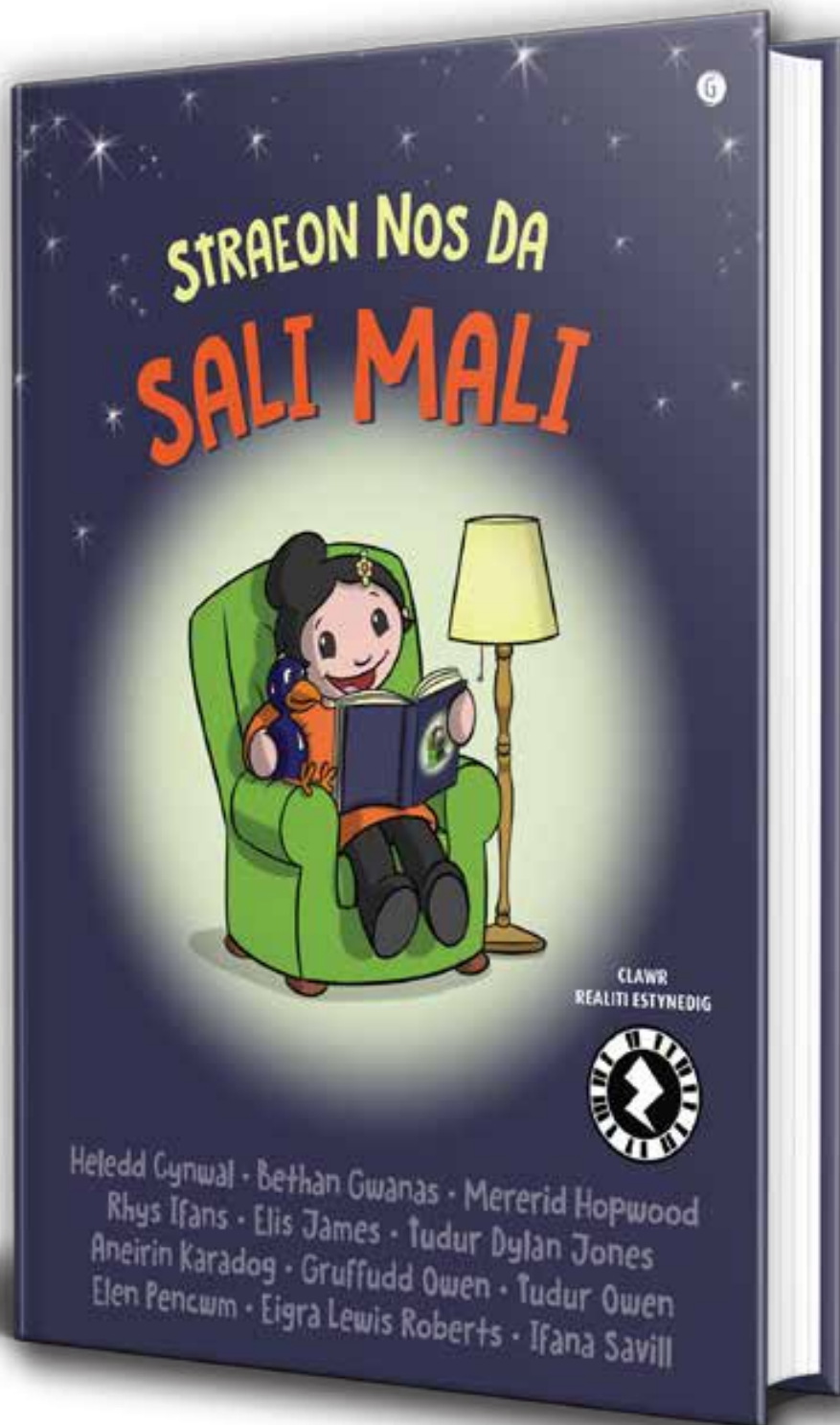
Books



garyevans™

dylunio graffeg arlunwaith
graphic design illustration

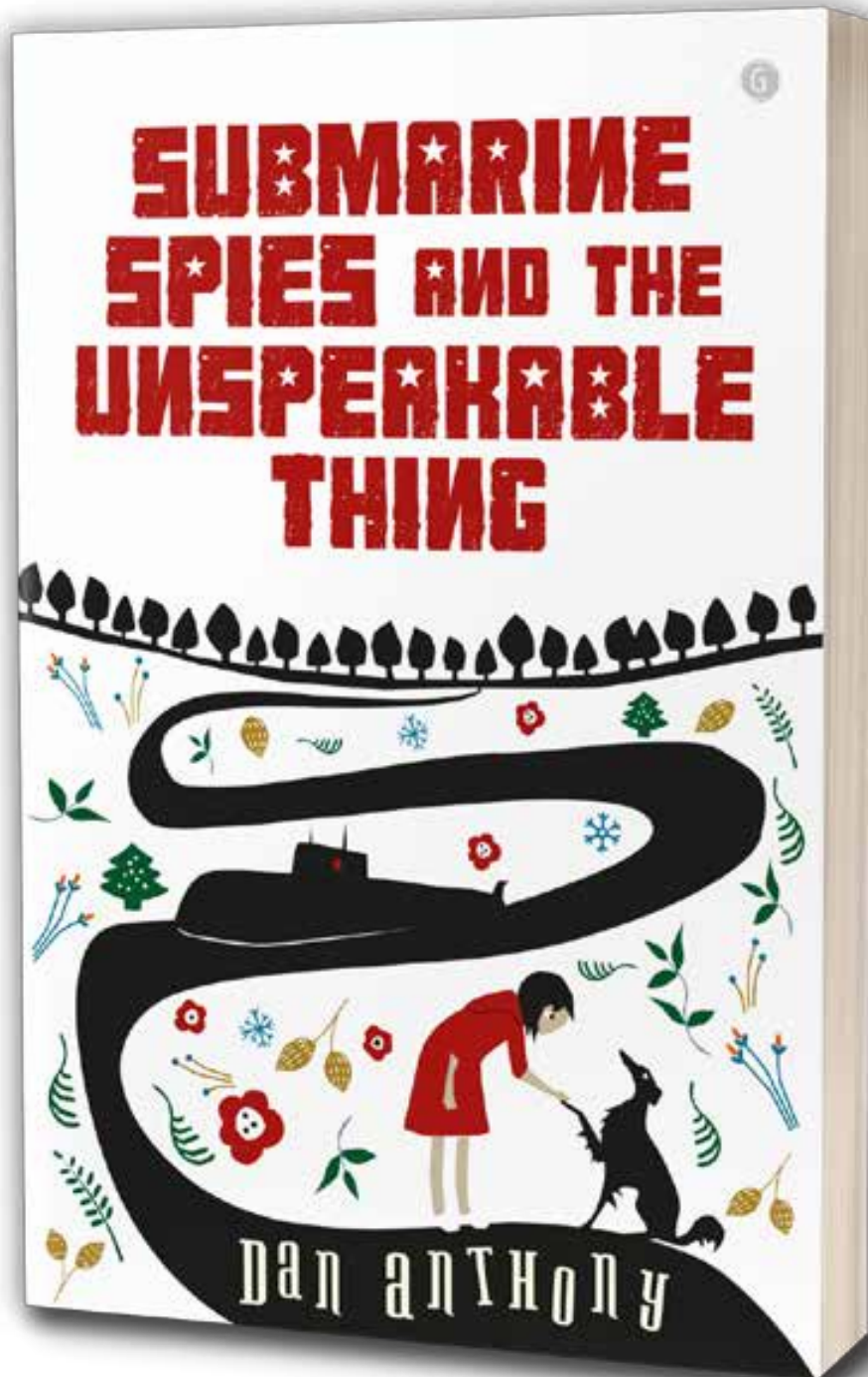
Books
for children

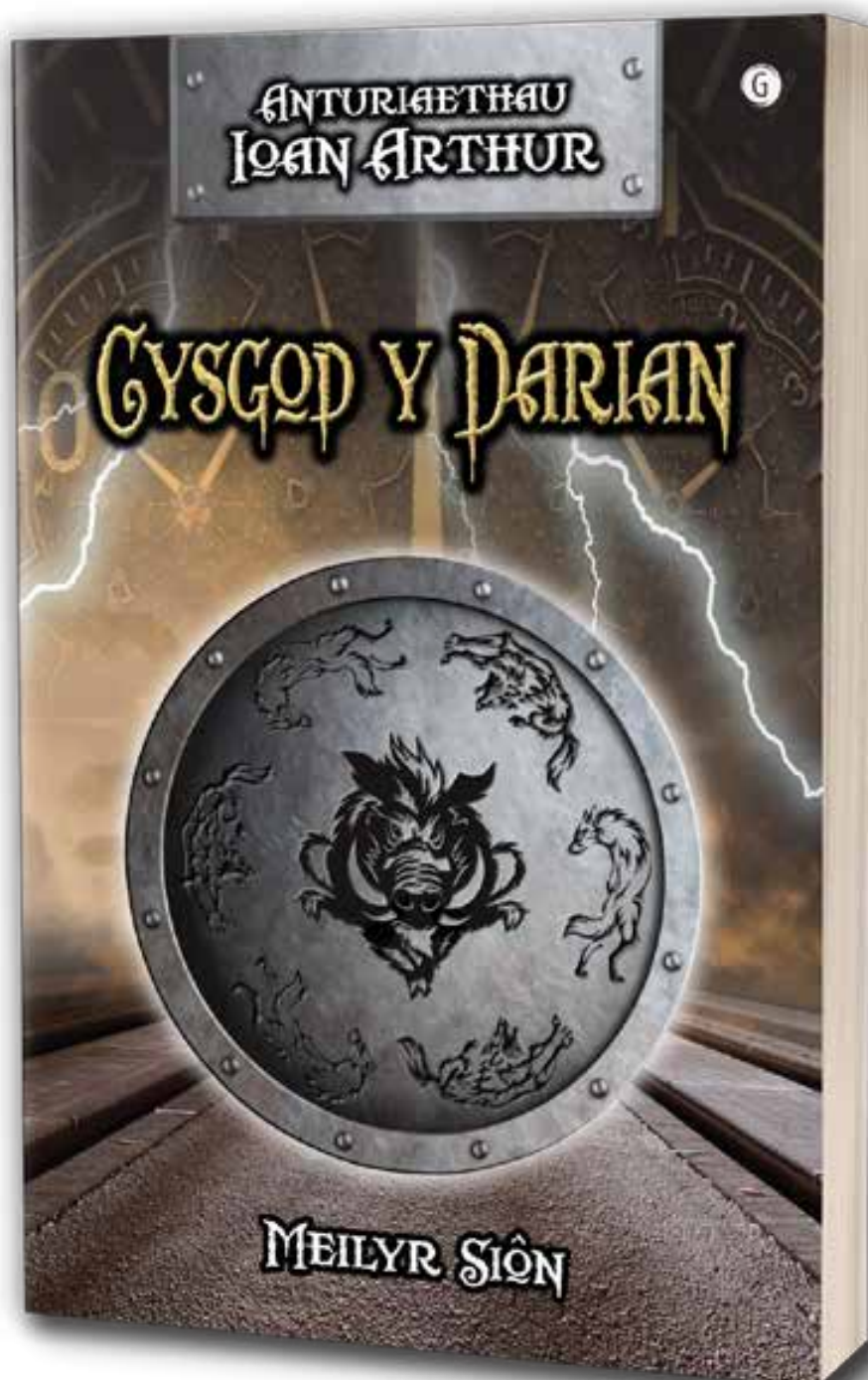


garyevans™

dylunio graffeg arlunwaith
graphic design illustration

Books
for children

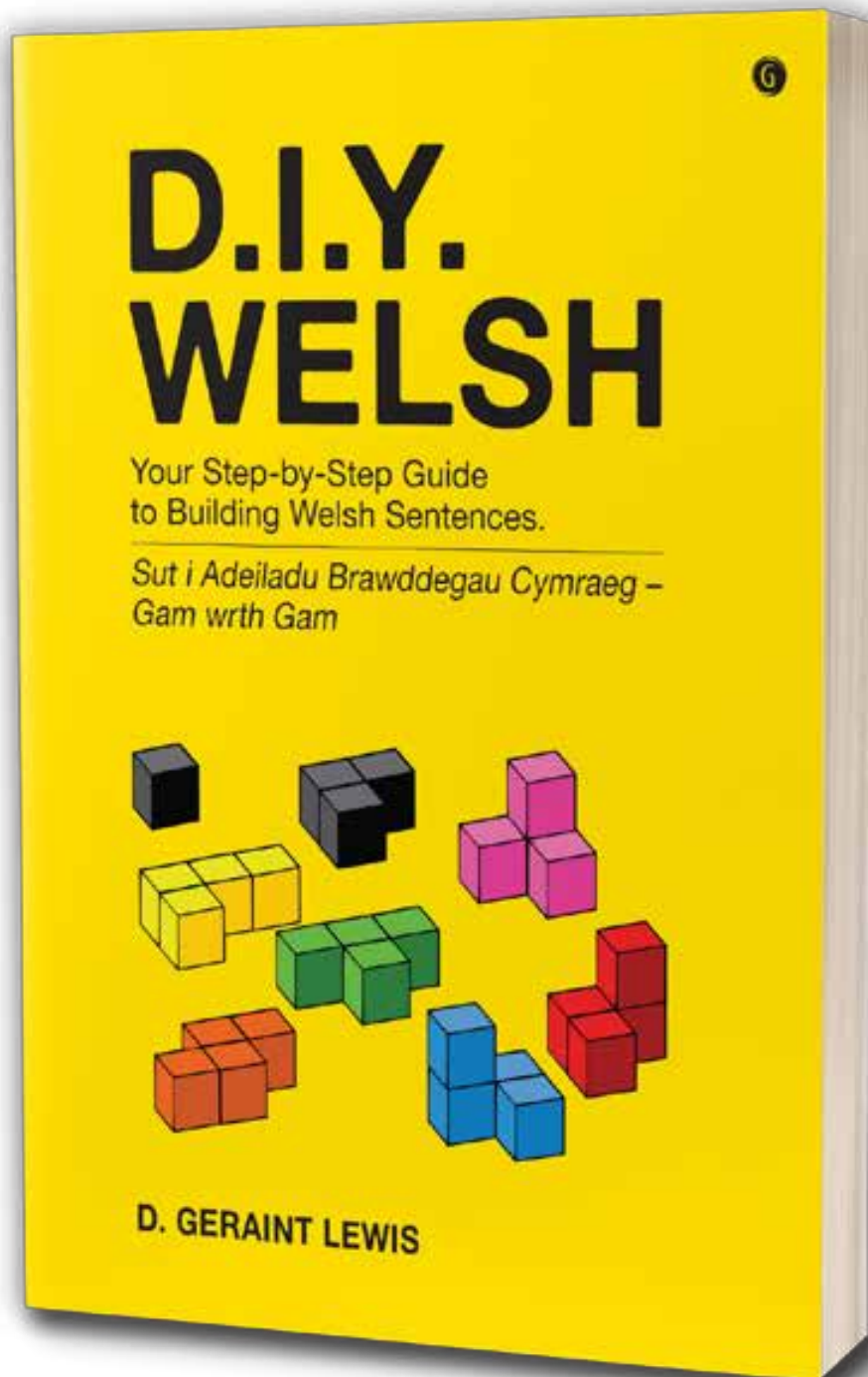




garyevans™

dylunio graffeg arlunwaith
graphic design illustration

Books
for children



garyevans™

dylunio graffeg arlunwaith
graphic design illustration

Books
for children



